

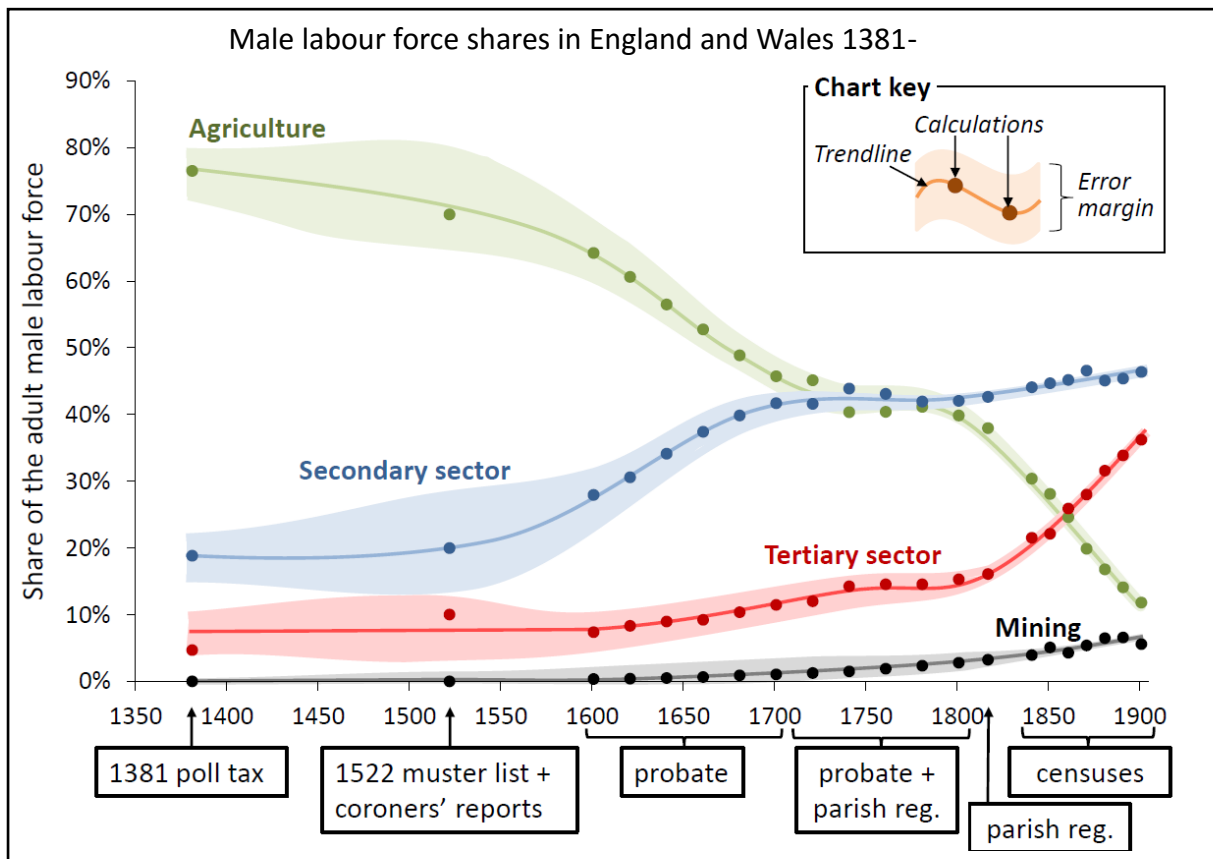
European Network for the Comparative History of Population Geography and Occupational Structure



Inaugural Meeting. 25th to 27th September, Crausaz Wordsworth Building, Robinson College, University of Cambridge

Background

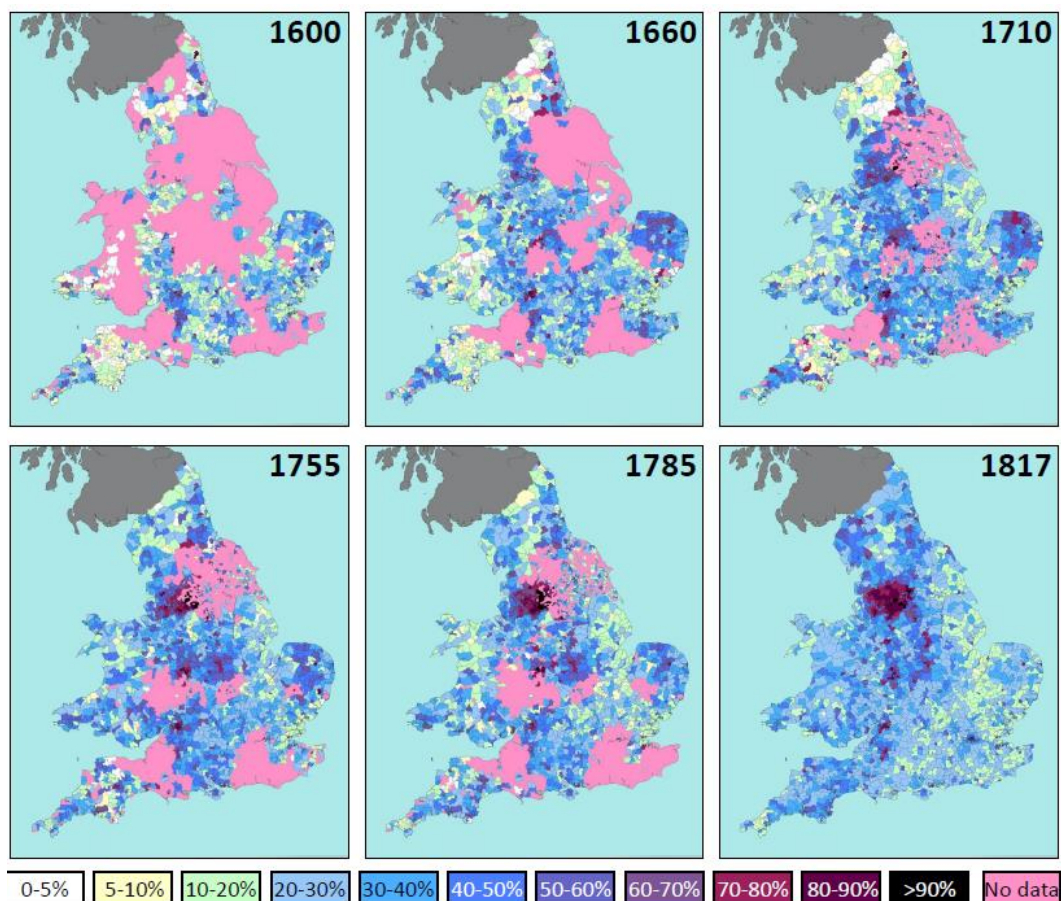
The Occupational Structure of Britain c.1379-1911 research programme, directed by Leigh Shaw-Taylor, Tony Wrigley and Amy Erickson, has two long term goals: (i) to reconstruct, quantitatively, in as much detail as the surviving source material (and the funders) will allow, the occupational structure of the British economy from the late medieval period to the outbreak of the First World War (ii) to facilitate and promote similar work by scholars working on other countries and to undertake comparative work with them.



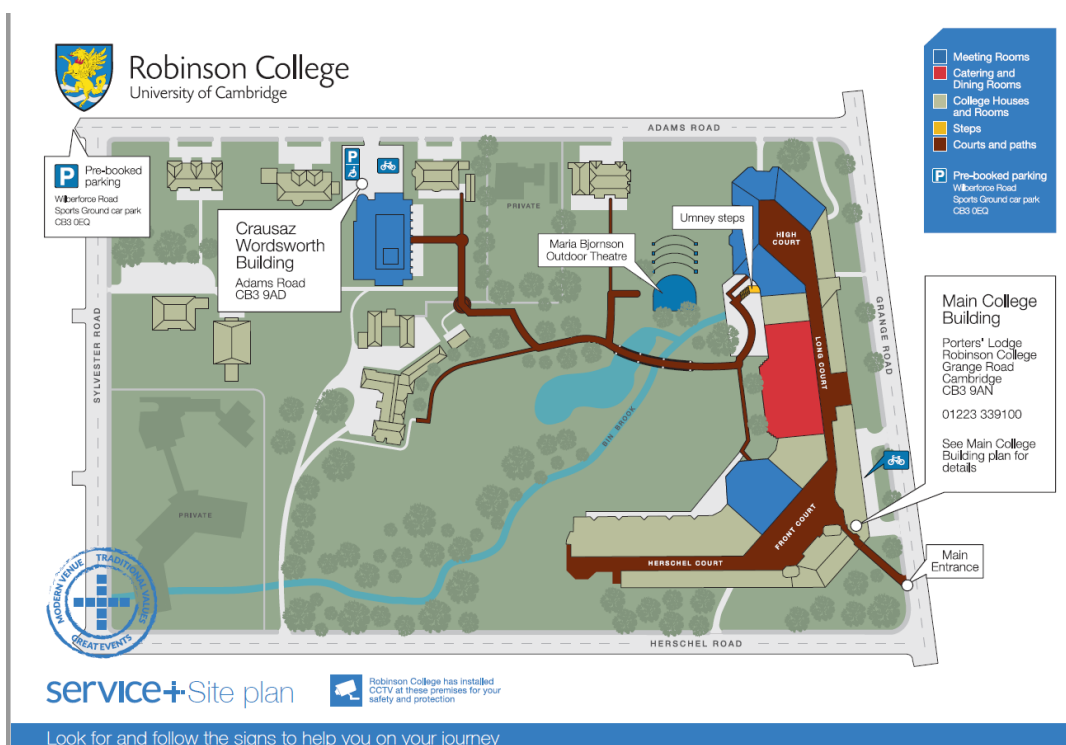
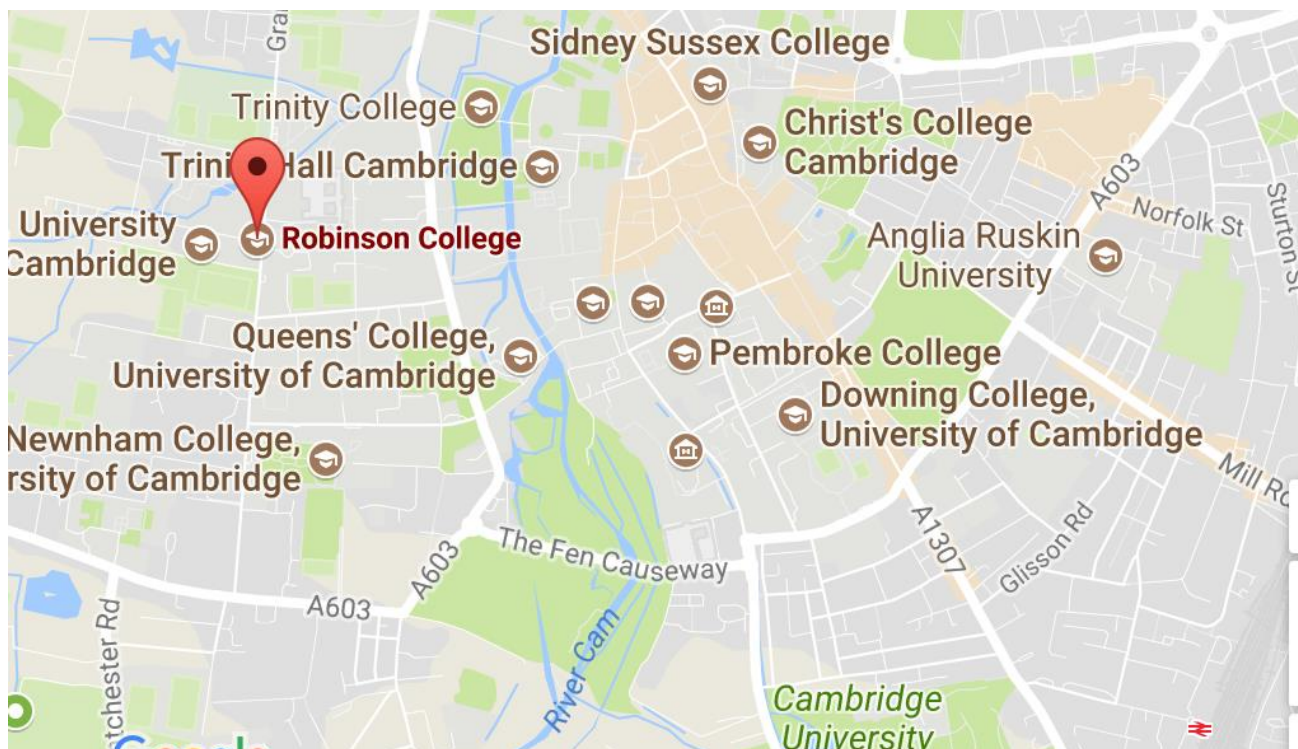
This meeting, which will take place as the British project approaches its 15th birthday (and the eighteenth anniversary of conception) is focussed on the second goal in a pan-European framework. The meeting will be the inaugural meeting of ENCHPOGOS, the European Network for the Comparative History of Population Geography and Occupational Structure and brings together scholars from all over Europe who are or plan to work on similar projects and are committed to working in a commensurable and common framework over the period 1500-1914 to create datasets not merely of national occupational structures but scalable datasets at the local and regional levels. Scholars working on the following countries have confirmed their attendance: Austria, Belgium, Czech Republic, England and Wales, France, Ireland, Italy, the Ottoman Territories (including S.E. Europe), Poland, Scotland, Spain and Sweden. We currently lack participants from Bulgaria, Denmark, Finland, Germany, Norway, Portugal, Switzerland and most of south-eastern Europe but hope to rectify these omissions in due course.

This meeting will be the first of a series of meetings to be hosted by project partners in different parts of Europe. It will consist of two components. First, a two day conference (25th and 26th September) with papers and discussion show-casing the full-range of work on the Occupational Structure of Britain project with the explicit aim of providing information likely to be helpful to those currently initiating projects elsewhere. Second, a workshop (27th September) focussed on the PSTI coding scheme devised by E.A. Wrigley and implemented with the late Ros Davies. The aim of the workshop is to identify concretely the ways in which PSTI should be extended and modified so as to maximise its utility to network participants. The focus of the workshop will be on making decisions. Power-points or full papers and other resources will be made available on the ENCHPOGOS website after the meeting to maximise the utility of the meeting.

Secondary sector share of the male labour force c.1600-.1817



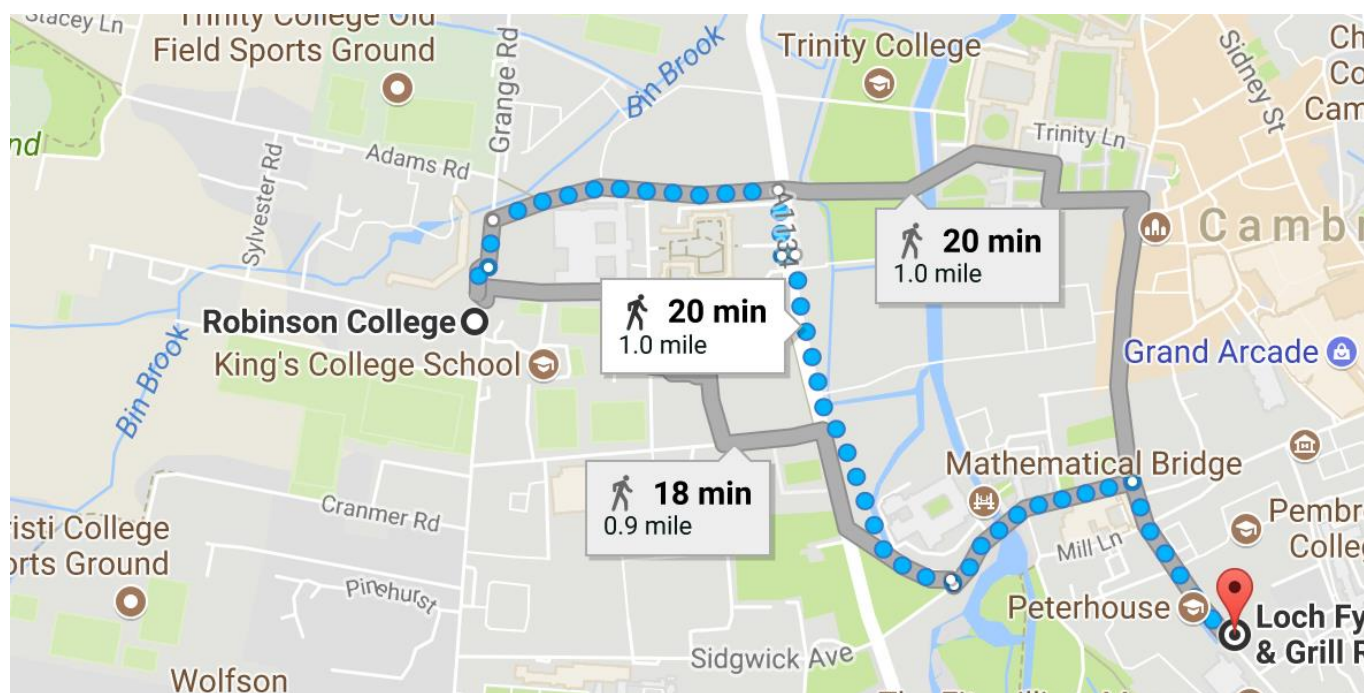
We will be holding further meetings in subsequent years. Provisionally each meeting will, like this one, have a twin focus on (i) a particular region of Europe (ii) a key methodological issue. The methodological issues to be discussed in future meetings include: female work and occupations; the problem of sectorally unspecific workers (e.g. labourers); urban/rural distinctions and typologies; by-employment; the relationship between population geography and occupational structure and the measurement and visualisation of population distributions. However, we will discuss/review arrangements for future meetings during the conference and workshop.



Sunday 24th September

7.00 pm **Dinner** Loch Fyne Restaurant. Opposite the Fitzwilliam Museum

For those arriving on the Sunday. Primarily aimed at those from outside Cambridge.



Note that session chairs are provisional in some cases and may change

Monday 25th September

Sources and Results for Male Occupational Structure 1381-1911



Coffee available from 9.00 am

9.30 Welcome/Introduction. Leigh Shaw-Taylor

9.45 Overview

Leigh Shaw-Taylor. A brief overview of the findings 1381-2011 (15).

10.00 The Spatial Architecture of the Project. Chair: Erdem Kabadayi.

Max Satchell, Creating the GIS-Infrastructure for the Project (20).

Gill Newton, Spatially Integrating the Datasets (20).

11.00 Coffee

11.30 Male Occupational Structure I. Chair: Guido Alfani.

Richard Smith, The Poll Tax Returns of 1377-1381 and the Occupational Structure of England (20).

Keith Sugden and Leigh Shaw-Taylor, Evidence from the Court of Common Pleas, 1413-1524 (20).

Tomasz Gromelski, Evidence from Coroners Courts, 1500-1600. (20).

13.00 Lunch

14.15 Male Occupational Structure II. Chair: Jane Whittle.

Leigh Shaw-Taylor, Parish Registers and Census Data 1695-1911 (20).

Sebastian Keibek, Testamentary Evidence, 1550-1850: Dealing with social bias, the sectoral allocation of labourers and by-employments (55).

16.00 Tea

16.30 – 17.30 Male Occupational Structure III. Chair: Sebastian Keibek.

Keith Sugden and Leigh Shaw-Taylor, Quarter Session Recognizances 1550-1820 (20).

Jacob Field, The Fleet Marriage Registers and the Occupational Structure of London 1600/1700-1851 (20)

18.30 Pre-dinner drinks

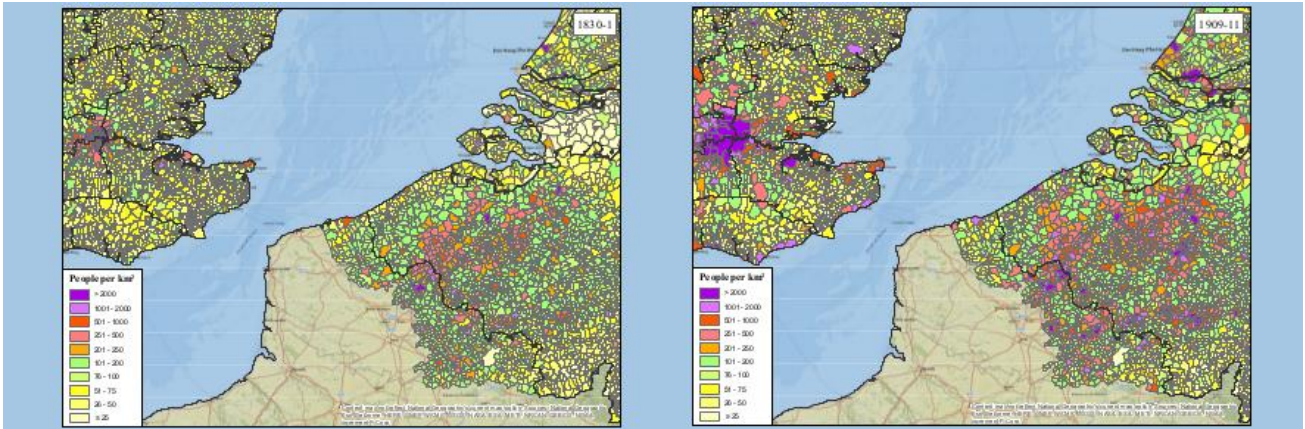
19.00 Dinner



Tuesday 26th September

Coffee available from 9am

9.30 Population Geography. Chair: Mike Anderson.



Leigh Shaw-Taylor and Alexis Litvine, Population Density and Population Geography (20).

Romola Davenport, Estimating Parish Populations c.1670 (20).

10.30 Coffee

11.00 Female/Gendered Occupations 1. Chair: Amy Erickson.



Xuesheng You, The censuses of 1851-1911 (15)

Xuesheng You, Estimating female occupational structure c.1600-1851 (15)

Jane Whittle, A task-based approach to work in rural England 1500-1700 and its implications for studies of occupational structure (20)

Auriane Terki-Mignot, Female employment 1787-1851: The Westmorland Census of 1787 (20).

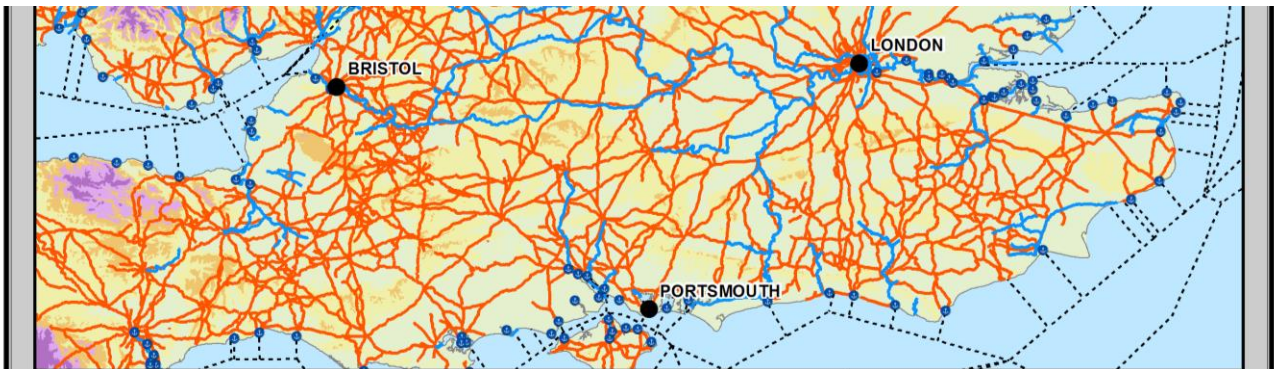
12.45 – 13.45 Lunch

13.45 Female/Gendered Occupations II. Chair: Carmen Sarasua.

Sophie McGeevor, Time use and Frédéric Le Play's Household Budgets (20)

Amy Erickson, Where we go from here: building a long-run female occupational structure for England?

2.30 Integrating occupational data with other datasets



Leigh Shaw-Taylor, The towns sub-project (15).

Eduard Alvarez, Oliver Dunn, Max Satchell, Xuesheng You, Overview of transport sub-project (30).

Keith Sugden, Coal and Textiles (15).



4.00 Tea

4.30-18.00 What can/could be done for Scotland and Ireland? Chair: Michael Pammer.



Mike Anderson and Corinne Roughley, The population geography of Scotland at parish level, 1755-1891. What may it tell us? (25)

Jason Begley, Frank Geary, and Tom Stark, Occupational Structure in Ireland in the nineteenth century. Data sources and avenues for Exploration (25)

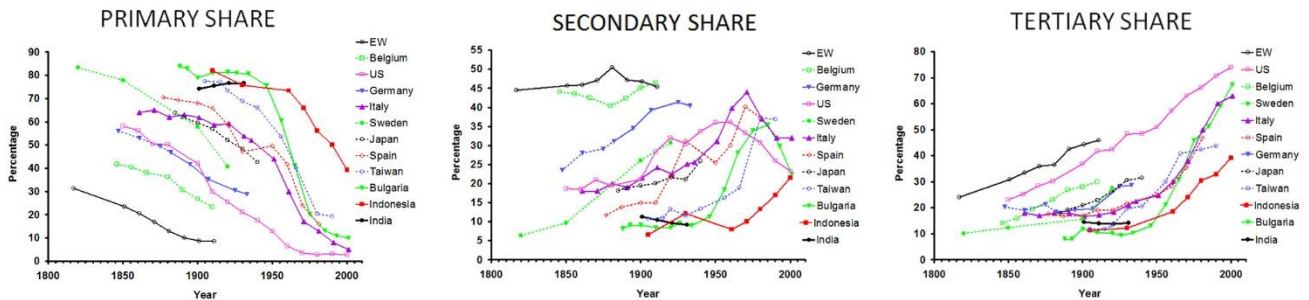
7.00 Pre dinner drinks

7.30 Dinner

Wednesday 27th September

Workshop on Coding Occupations: Adapting and extending PSTI to meet all our needs but retaining commensurability

We are distinguishing the conference and the workshop because we anticipate there may be people not working on occupational structure themselves who will want to attend the conference. The workshop will be aimed more narrowly at those wanting to undertake research projects in this area.



Coffee available from 9.00

9.30 PST and PSTI. Chair: Erik Buyst

E.A. Wrigley, The PST system of classifying Occupations (30)

L. Shaw-Taylor, PSTI (10)

10.30-11.00 Coffee

11.00 Working with PSTI. Problems and Future Development. Chair: Jason Begley.

M. Erdem Kabadayi (10)

Erik Buyst (10)

Carmen Sarasua (10)

12.00 Future Plans for the Network. Chair: Leigh Shaw-Taylor

13.00 Lunch

Funding

We would like to acknowledge generous support for the meeting from the Economic History Society, the British Academy and the Ellen MacArthur Trust Cambridge.

We would also like to acknowledge generous support for the Occupational Structure of Britain project from the Economic and Social Research Council; the Leverhulme Trust; the British Academy; the Isaac Newton Trust (Cambridge)

